

## The Kent (Ashbury)

1401 SQ FT

4403 6 Street NW



- Former showhome
- 3 bedrooms, 2.5 bathrooms,
- Second floor laundry
- 4 piece ensuite
- Hardwood flooring on main floor
- Tile flooring in bathrooms
- Full height ceramic backsplash
- Granite countertops
- Gas fireplace
- Railing throughout
- Rough-in in the basement for future bathroom
- 6 Appliance package (washer, dryer, fridge, OTR, dishwasher, range)
- Air conditioning
- Security system
- Fence
- Full Landscaping
- 10 x 10 rear deck
- Gasline to BBQ
- Rough-in central VAC
- Ceiling fan in master bedroom
- Fabric window coverings
- Hunter Douglas blinds

### Maple Crest Showhome

4403 - 6 St. NW, Edmonton, AB.

587.524.2160

maplecrestsales@bedrockhomes.ca

Job # MPC-0-033794 Lot 63, Block 11, Plan 152-3661

### Notes:

---

---

---

---

---

---

**bedrockhomes.ca**

VISIT US AT ANY OF OUR SHOWHOMES!

Monday - Thursday 3-8pm, Weekends & Holidays 12-5PM



# The Kent (Ashbury)

1401 SQ FT

4403 6 Street NW



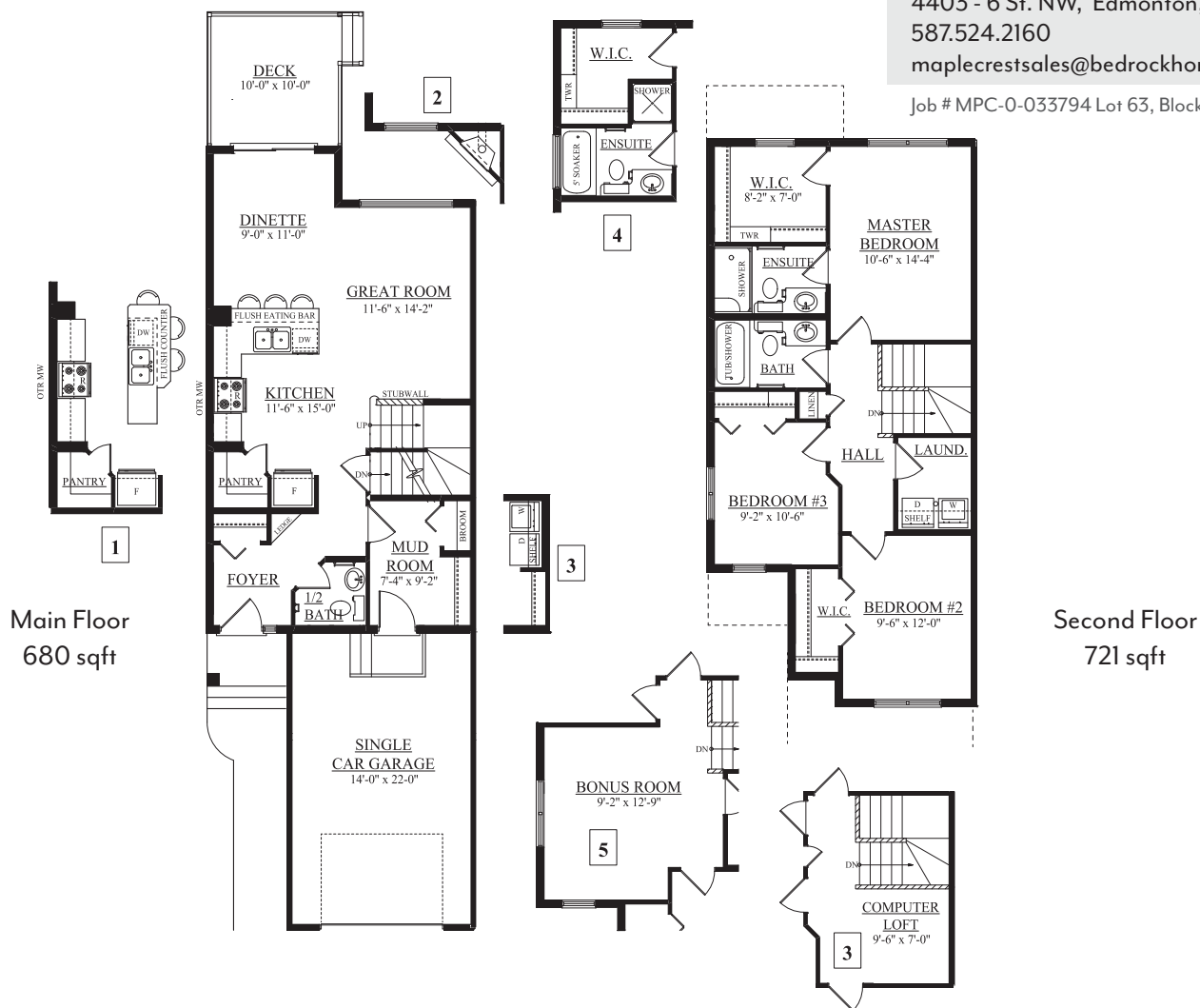
## Maple Crest Showhome

4403 - 6 St. NW, Edmonton, AB.

587.524.2160

maplecrestsales@bedrockhomes.ca

Job # MPC-0-033794 Lot 63, Block 11, Plan 152-3661



bedrockhomes.ca

VISIT US AT ANY OF OUR SHOWHOMES!

Monday - Thursday 3-8pm, Weekends & Holidays 12-5PM

